

PRIME MEATPACKING OFFICE AVAILABLE

71 Gansevoort Street / 2C

Corner of Washington Street

PREMISES

Office 2C	2,200 sq ft
Ceiling Height	10 ft
Availability	Immediate

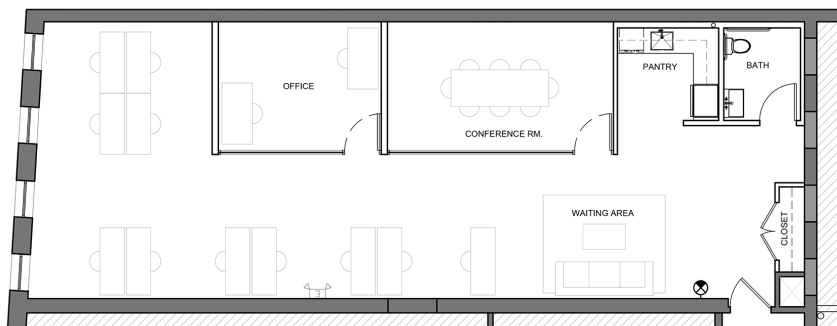
FEATURES

- Pre-built suite to include new pantry, conference room, private restroom and open space
- New lobby and elevator
- Column-free space
- Finished ADA-compliant restrooms
- Tenant controlled air conditioning
- State-of-the-art CCTV video security and card key access
- Spectrum and Fios available
- Overlooks the Whitney Museum and the High Line

LOCATION



FLOORPLANS



NEIGHBORS

- Anine Bing
- Apple
- Brunello Cucinelli
- Christian Louboutin
- Diane Von Furstenburg
- Gansevoort Hotel
- Golden Goose
- Hermes
- Loro Piana
- Match.com
- Pastis
- Restoration Hardware & Hotel
- Rolex Boutique
- Saint Laurent
- Soho House
- The Standard Hotel
- Tesla
- Theory
- Vince
- Warby Parker
- Whitney Museum
- Zadig & Voltaire
- Zegna

833 Washington Street, 2nd Floor
 New York, NY 10014
 212-924-2973
 info@romanoffequities.com
 romanoffequities.com

ROMANOFF EQUITIES INC.

Darryl Romanoff
 212-323-7740
 darryl@romanoffequities.com

Stuart Romanoff
 212-323-7750
 stuart@romanoffequities.com