



PRIME MEATPACKING RETAIL AVAILABLE

825 Washington Street

between Gansevoort Street and Little West 12th Street

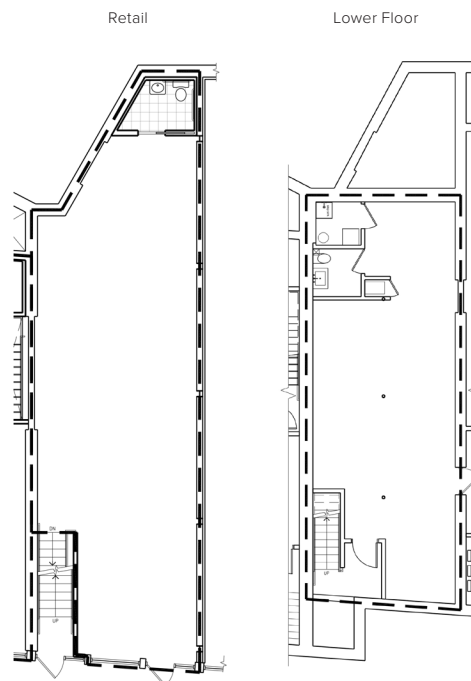
PREMISES

Ground Floor	1,043 sq ft
Lower Level	939 sq ft
Frontage	13 ft
Ceiling Height	11 ft 6 in
Availability	Leased

FEATURES

- High traffic location
- Across from the High Line main entrance and Whitney Museum
- Move-in ready
- Column free

FLOORPLANS



LOCATION



NEIGHBORS

- Anine Bing
- Apple
- Brunello Cucinelli
- Christian Louboutin
- Diane Von Furstenburg
- Gansevoort Hotel
- Golden Goose
- Hermes
- Loro Piana
- Match.com
- Patis
- Restoration Hardware & Hotel
- Rolex Boutique
- Saint Laurent
- Soho House
- The Standard Hotel
- Tesla
- Theory
- Vince
- Warby Parker
- Whitney Museum
- Zadig & Voltaire
- Zegna

833 Washington Street, 2nd Floor
 New York, NY 10014
 212-924-2973
 info@romanoffequities.com
 romanoffequities.com

Darryl Romanoff
 212-323-7740
 darryl@romanoffequities.com

Stuart Romanoff
 212-323-7750
 stuart@romanoffequities.com